

Specifications

Engine

| Model | HINO J08E-UV |
|--------------------|---|
| Type | Direct injection, water-cooled, 4-cycle engine with turbocharger, intercooler |
| No. of cylinders | 6 |
| Bore and stroke | 112 mm x 130 mm |
| Displacement | 7.684 L |
| Rated power output | 201 kW/2,100 min ⁻¹ (ISO 9249) 213 kW/2,100 min ⁻¹ (ISO 14396) |
| Max. torque | 988 N·m/1,600 min ⁻¹ (ISO 9249) 1,017 N·m/1,600 min ⁻¹ (ISO 14396) |

Hydraulic System

| Pump | |
|----------------------|---|
| Type | Two variable displacement pumps + one gear pump |
| Max. discharge flow | 2 x 294 L/min, 1 x 20 L/min |
| Relief valve setting | |
| Boom, arm and bucket | 34.3 MPa {350 kgf/cm ² } |
| Power Boost | 37.8 MPa {385 kgf/cm ² } |
| Travel circuit | 34.3 MPa {350 kgf/cm ² } |
| Swing circuit | 29.0 MPa {296 kgf/cm ² } |
| Control circuit | 5.0 MPa {50 kgf/cm ² } |
| Pilot control pump | Gear type |
| Main control valve | 6-spool |
| Oil cooler | Air cooled type |

Swing System

| | |
|-------------------------|--|
| Swing motor | Axial piston motor |
| Brake | Hydraulic; locking automatically when the swing control lever is in neutral position |
| Parking brake | Oil disc brake, hydraulic operated automatically |
| Swing speed | 9.7 min ⁻¹ {rpm} |
| Tail swing radius | 3,500 mm |
| Min. front swing radius | 4,370 mm |

Attachments

Backhoe bucket and combination

| Use | Backhoe bucket | | | | | |
|------------------------|----------------------------|----------------------|-------|------------|-------|-------|
| | Normal digging | | | Light-duty | | |
| Bucket capacity | ISO heaped | m³ | 1.2 | 1.4 | 1.6 | 1.8 |
| Struck | | m³ | 0.84 | 1.0 | 1.2 | 1.4 |
| Opening width | With side cutter | mm | 1,240 | 1,420 | 1,570 | — |
| | Without side cutter | mm | 1,110 | 1,300 | 1,450 | 1,680 |
| No. of teeth | | | 4 | 5 | 5 | 5 |
| Bucket weight | | kg | 930 | 1,070 | 1,100 | 1,200 |
| Combination | 2.6 m short arm | | ○ | ○ | ◎ | △ |
| | 3.3 m standard arm | | ○ | ◎ | △ | × |
| | 4.15 m long arm | | ◎ | △ | × | × |

◎ Standard ○ Recommended △ Loading only × Not recommended

Travel System

| | |
|-----------------------|-----------------------------------|
| Travel motors | 2 x axial-piston, two-step motors |
| Travel brakes | Hydraulic brake per motor |
| Parking brakes | Oil disc brake per motor |
| Travel shoes | 48 each side |
| Travel speed | 5.4/3.2 km/h |
| Drawbar pulling force | 321 kN (ISO 7464) |
| Gradeability | 70 % {35°} |

Cab & Control

| Cab |
|--|
| All-weather, sound-suppressed steel cab mounted on the high suspension mounts filled with silicone oil and equipped with a heavy, insulated floor mat. |
| Control |
| Two hand levers and two foot pedals for travel |
| Two hand levers for excavating and swing |
| Electric rotary-type engine throttle |

Boom, Arm & Bucket

| | |
|-----------------|-------------------|
| Boom cylinders | 140 mm x 1,550 mm |
| Arm cylinder | 170 mm x 1,788 mm |
| Bucket cylinder | 150 mm x 1,193 mm |

Refilling Capacities & Lubrications

| | |
|-----------------------|------------------------|
| Fuel tank | 580 L |
| Cooling system | 31.1 L |
| Engine oil | 28.9 L |
| Travel reduction gear | 2 x 9.5 L |
| Swing reduction gear | 7.4 L |
| Hydraulic oil tank | 245 L tank oil level |
| | 413 L hydraulic system |



Working Ranges

Unit: m

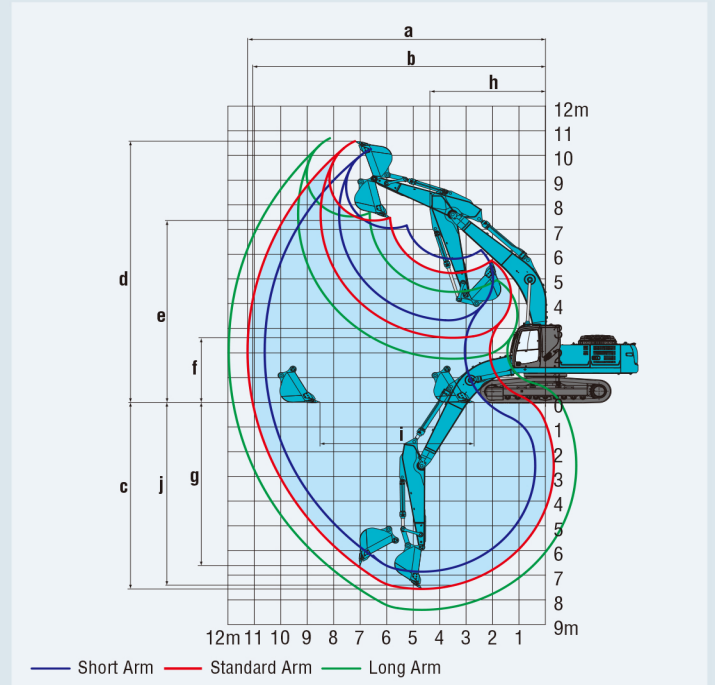
| Boom | 6.5 m |
|--|--------------------|
| Range | Arm Standard 3.3 m |
| a- Max. digging reach | 11.26 |
| b- Max. digging reach at ground level | 11.06 |
| c- Max. digging depth | 7.56 |
| d- Max. digging height | 10.58 |
| e- Max. dumping clearance | 7.37 |
| f- Min. dumping clearance | 2.62 |
| g- Max. vertical wall digging depth | 6.61 |
| h- Min. swing radius | 4.37 |
| i- Horizontal digging stroke at ground level | 5.82 |
| j- Digging depth for 2.4 m (8') flat bottom | 7.4 |
| Bucket capacity ISO heaped m ³ | 1.4 |

Digging Force (ISO 6015)

Unit: kN

| Arm length | Standard 3.3 m |
|----------------------|----------------|
| Bucket digging force | 222 244* |
| Arm crowding force | 165 181* |

*Power Boost engaged.

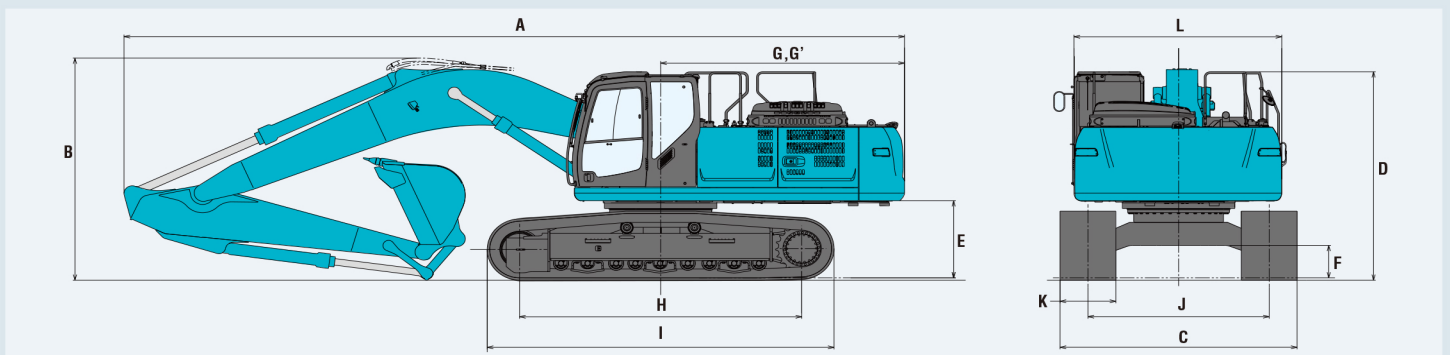


Dimensions

| Arm length | Standard 3.3 m |
|-----------------------------------|----------------|
| A Overall length | 11,200 |
| B Overall height (to top of boom) | 3,420 |
| C Overall width of crawler | SK350LC 3,190 |
| | SK350NLC 2,990 |
| D Overall height (to top of cab) | 3,210 |
| E Ground clearance of rear end* | 1,190 |
| F Ground clearance* | 500 |
| G Tail swing radius | 3,500 |

| | | Unit: mm |
|-----------------------------------|---|----------|
| G' | Distance from center of swing to rear end | 3,500 |
| H Tumbler distance | SK350LC | 4,050 |
| | SK350NLC | 4,050 |
| I Overall length of crawler | SK350LC | 4,960 |
| | SK350NLC | 4,960 |
| J Track gauge | SK350LC | 2,590 |
| | SK350NLC | 2,390 |
| K Shoe width | | 600 |
| L Overall width of upperstructure | | 2,980 |

*Without including height of shoe



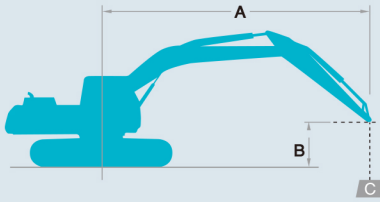
Operating Weight & Ground Pressure

In standard trim, with standard boom, 3.3 m arm, and 1.4 m³ ISO heaped bucket

| Shaped | Triple grouser shoes (even height) | | |
|--------------------------|------------------------------------|-----|--------|
| Shoe width | mm | | 800 |
| Overall width of crawler | SK350LC | mm | 3,390 |
| | SK350NLC | mm | — |
| Ground pressure | SK350LC | kPa | 51 |
| | SK350NLC | kPa | — |
| Operating weight | SK350LC | kg | 36,500 |
| | SK350NLC | kg | — |



Lifting Capacities



Rating over front



Rating over side or 360 degrees

A: Reach from swing centerline to arm top

B: Arm top height above/below ground

C: Lifting capacities in Kilograms

Bucket: Without bucket

Relief valve setting: 37.8 MPa (385 kgf/cm²)

| SK350LC | | Boom: 6.5 m Arm: 3.3 m, Bucket: without Shoe: 600 mm | | | | | | | | | | | | | | | |
|---------|----|--|---------|---------|---------|---------|--------|---------|--------|---------|--------|--------|-------|---------------|--------|--------|--------|
| B | A | 1.5 m | | 3.0 m | | 4.5 m | | 6.0 m | | 7.5 m | | 9.0 m | | At Max. Reach | | Radius | |
| | | | | | | | | | | | | | | | | | |
| 9.0 m | kg | | | | | | | | | | | | | | *6,370 | *6,370 | 6.56 m |
| 7.5 m | kg | | | | | | | | | *7,890 | *7,890 | | | | *5,840 | *5,840 | 7.86 m |
| 6.0 m | kg | | | | | | | | | *8,010 | 7,820 | | | | *5,650 | *5,650 | 8.71 m |
| 4.5 m | kg | | | | | | | *9,810 | *9,810 | *8,580 | 7,560 | *7,900 | 5,660 | | *5,660 | 5,390 | 9.25 m |
| 3.0 m | kg | | | | | *15,260 | 15,080 | *11,280 | 9,990 | *9,340 | 7,240 | *8,260 | 5,510 | | *5,840 | 5,040 | 9.52 m |
| 1.5 m | kg | | | | | *17,510 | 14,050 | *12,580 | 9,440 | *10,070 | 6,940 | 8,250 | 5,360 | | *6,210 | 4,920 | 9.54 m |
| G.L. | kg | | | | | *18,290 | 13,600 | *13,340 | 9,080 | *10,540 | 6,720 | 8,130 | 5,250 | | *6,840 | 5,000 | 9.33 m |
| -1.5 m | kg | | | *15,400 | *15,400 | *17,940 | 13,500 | *13,410 | 8,930 | 10,440 | 6,620 | | | | *7,900 | 5,340 | 8.85 m |
| -3.0 m | kg | *17,520 | *17,520 | *22,610 | *22,610 | *16,610 | 13,630 | *12,670 | 8,970 | *9,830 | 6,660 | | | | *8,770 | 6,080 | 8.07 m |
| -4.5 m | kg | | | *18,500 | *18,500 | *14,020 | 13,970 | *10,650 | 9,210 | | | | | | *8,690 | 7,710 | 6.88 m |



STANDARD EQUIPMENT

ENGINE

- Engine, HINO J08E-UV, diesel engine with turbocharger and intercooler
- Automatic engine deceleration
- Batteries (2 x 12V - 120Ah)
- Starting motor (24V - 5kW), 60 amp alternator
- Automatic engine shut-down for low engine oil pressure
- Engine oil pan drain cock
- Double element air cleaner

CONTROL

- Working mode selector (H-mode, S-mode and ECO-mode)
- Power Boost
- Heavy lift

SWING SYSTEM & TRAVEL SYSTEM

- Swing rebound prevention system
- Straight propel system
- Two-speed travel with automatic shift down
- Sealed & lubricated track links
- Grease-type track adjusters
- Automatic swing brake

HYDRAULIC

- Arm regeneration system
- Auto warm up system
- Aluminum hydraulic oil cooler

MIRRORS & LIGHTS

- Three rearview mirrors
- Three front working lights

CAB & CONTROL

- Two control levers, pilot-operated
- Tow eyes
- Horn, electric
- Integrated left-right slide-type control box
- Cab light (interior)
- Luggage tray
- Large cup holder
- Detachable two-piece floor mat
- Retractable seatbelt
- Headrest
- Handrails
- Intermittent windshield wiper with double-spray washer
- Skylight
- Tinted safety glass
- Pull-type front window and removable lower front window
- Easy-to-read multi-display color monitor
- Automatic air conditioner
- Emergency escape hammer
- Suspension seat
- Radio, AM./FM stereo speaker
- TOP guard

Note: This catalog may contain attachments and optional equipment that are not available in your area. And it may contain photographs of machines with specifications that differ from those of machines sold in your areas. Please consult your nearest KOBELCO distributor for those items you require. Due to our policy of continuous product improvements all designs and specifications are subject to change without advance notice. Copyright by **KOBELCO CONSTRUCTION MACHINERY CO., LTD.** No part of this catalog may be reproduced in any manner without notice.

KOBELCO CONSTRUCTION MACHINERY CO., LTD.

17-1, Higashigotanda 2-chome, Shinagawa-ku, Tokyo 141-8626 JAPAN
Tel: +81 (0) 3-5789-2146 Fax: +81 (0) 3-5789-2135
www.kobelco-kenki.co.jp/english_index.html

Inquiries To: