



# Self-Propelled Telescopic Booms

## S<sup>®</sup>-65 XC™

### Specifications

Models	S-65 XC
--------	---------

Measurements	Metric
Working height maximum*	21.84 m
Platform height maximum	19.84 m
Horizontal reach maximum	16.51 m
Below ground reach	1.70 m
<b>A</b> Platform length - 8 ft model	0.91 m
<b>B</b> Platform width - 8 ft model	2.44 m
<b>C</b> Height - stowed	2.72 m
<b>D</b> Length - stowed	9.73 m
<b>E</b> Width	2.49 m
<b>F</b> Wheelbase	2.52 m
<b>G</b> Ground clearance - center	0.37 m

### Productivity

Maximum lift capacity - unrestricted	300 kg
- restricted	454 kg
Platform rotation	160°
Vertical jib rotation - up/down	135°
Turntable rotation	360° continuous
Turntable tailswing - axles retracted	1.41 m
Drive speed - stowed	4.8 km/h
- raised (below 60 ft)	1.1 km/h
Gradeability - stowed**	45%
Turning radius - axle retracted: inside	8.03 m
outside	9.96 m
Controls	12 V DC proportional
Tires - RT lug	355/55D 625 FF

### Power

Power source	48 hp (35.79 kW) Deutz diesel T4f D2.9L4
	48 hp (35.79 kW) Deutz diesel T4i D2011L03i
	49 hp (36.54 kW) Perkins turbo diesel T4f 404F-E22T
	74 hp (55.18 kW) Deutz turbo diesel T4i D2011L04i
	74 hp, Deutz Turbo Diesel T4f TD2.9L4

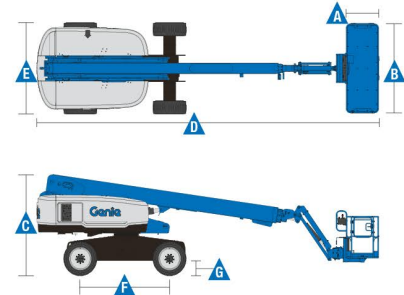
Auxiliary power unit	12 V DC
Hydraulic tank capacity	170 L
Fuel tank capacity diesel	132 L

### Weight\*\*\*

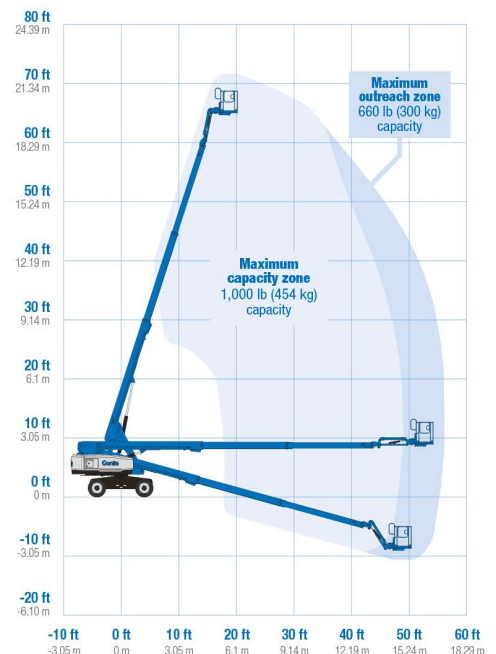
4WD	11,294 kg
-----	-----------

### Standards Compliance

ANSI/SAIA A92.20, CSA B354.7, GB 25849, EN 280, AS/NZS 1418.10



### Range Of Motion S-65 XC



\* The metric equivalent of working height adds 2 m to platform height. U.S. adds 6 ft to platform height.

\*\* Gradeability applies to driving on slopes, see operator's manual for details regarding slope ratings.

\*\*\* Weight will vary depending on slope, see operator's manual for details regarding slope ratings.

\*\*\*\* S-60 XC not available with track system